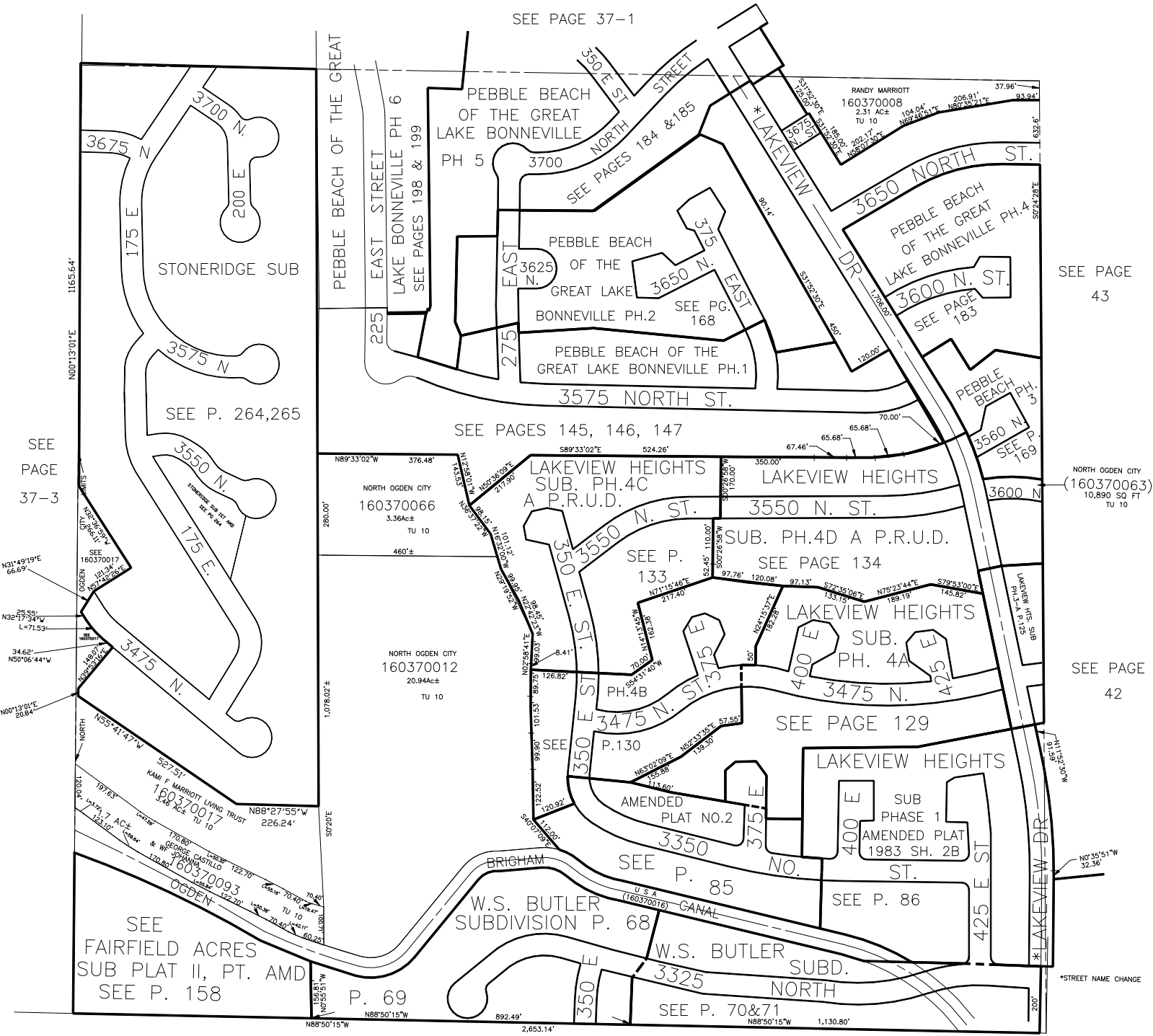


S.E. 1/4
SECTION 20, T.7N., R.1W., S.L.B.&M.

IN NORTH OGDEN CITY
SCALE 1" = 200'

TAXING UNIT: 03,10

SEE PAGE 37-1



SEE PAGE 43

NORTH OGDEN CITY (160370063)
10,890 SQ FT
TU 10

SEE PAGE 42

SEE PAGE 37-3

SEE P. 264,265

SEE PAGES 145, 146, 147

SEE P. 133
SEE PAGE 134

SEE PAGE 129

SEE P. 85

SEE P. 86

P. 69

SEE P. 70&71

SEE BOOK 17, PAGE 38